

ACI Racing Weekend Imola, 1-2 Giugno 2024

Italian F4 Championship - Results Free Practice 2

Imola Circuit 4.909 m

1 / 2

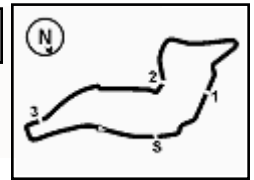
No.	Driver	Nat	Entrant	Team	Car	Class	Time	Gap	Rel.	Laps
1	80 POWELL Alex	USA	Prema Racing	Prema Racing	Tatuus F4-T421	R	1'45.192			15
2	50 GOWDA Dion	IND	Prema Racing	Prema Racing	Tatuus F4-T421		1'45.212	0.020	0.020	15
3	51 NAKAMURA-BERTA Kean	JPN	Prema Racing	Prema Racing	Tatuus F4-T421	R	1'45.373	0.181	0.161	15
4	36 JONSSON Gustav	SWE	Van Amersfoort Racing	Van Amersfoort Racing	Tatuus F4-T421		1'45.414	0.222	0.041	8
5	27 SLATER Freddie	GBR	Prema Racing	Prema Racing	Tatuus F4-T421		1'45.422	0.230	0.008	15
6	33 STOLCERMANIS Tomass	LVA	Prema Racing	Prema Racing	Tatuus F4-T421	R	1'45.532	0.340	0.110	15
7	8 KOSTIC Andrija	SRB	Van Amersfoort Racing	Van Amersfoort Racing	Tatuus F4-T421	R	1'45.548	0.356	0.016	7
8	7 SAMMALISTO Luka	FIN	R-ACE GP	R-ACE GP	Tatuus F4-T421	R	1'45.605	0.413	0.057	15
9	73 OLIVIERI Emanuele	ITA	AKM Motorsport	AKM Motorsport	Tatuus F4-T421	R	1'45.610	0.418	0.005	13
10	14 AL DHAHERI Rashid	UAE	Prema Racing	Prema Racing	Tatuus F4-T421		1'45.647	0.455	0.037	15
11	23 FRANCO Reno	NLD	Jenzer Motorsport	Jenzer Motorsport	Tatuus F4-T421		1'45.671	0.479	0.024	8
12	31 BOHRA Akshay	USA	US Racing	US Racing	Tatuus F4-T421		1'45.807	0.615	0.136	6
13	21 ISCHER Ethan	CHE	Jenzer Motorsport	Jenzer Motorsport	Tatuus F4-T421		1'45.876	0.684	0.069	8
14	6 YAMAKOSHI Hiyu	JPN	Van Amersfoort Racing	Van Amersfoort Racing	Tatuus F4-T421		1'45.888	0.696	0.012	6
15	45 BEETON Jack	AUS	US Racing	US Racing	Tatuus F4-T421		1'45.910	0.718	0.022	4
16	88 HODENIUS Lin	NLD	Van Amersfoort Racing	Van Amersfoort Racing	Tatuus F4-T421		1'46.115	0.923	0.205	9
17	16 LARINI Davide	ITA	PHM AIX Racing	PHM AIX Racing	Tatuus F4-T421		1'46.131	0.939	0.016	16
18	77 YEY Enzo	CHN	R-ACE GP	R-ACE GP	Tatuus F4-T421	R	1'46.170	0.978	0.039	16
19	49 PETROVIC Andrej	SRB	PHM AIX Racing	PHM AIX Racing	Tatuus F4-T421	R	1'46.207	1.015	0.037	16
20	55 RODELLA Alvise	ITA	Van Amersfoort Racing	Van Amersfoort Racing	Tatuus F4-T421		1'46.226	1.034	0.019	9
21	10 FERREIRA Matheus	BRA	US Racing	US Racing	Tatuus F4-T421		1'46.298	1.106	0.072	4
22	3 POPOV Maksimilian	GRD	PHM AIX Racing	PHM AIX Racing	Tatuus F4-T421	R	1'46.314	1.122	0.016	15
23	12 PRADEL Gianmarco	AUS	US Racing	US Racing	Tatuus F4-T421		1'46.383	1.191	0.069	5
24	52 SAVINKOV Oleksandr	UKR	AKM Motorsport	AKM Motorsport	Tatuus F4-T421	R	1'46.411	1.219	0.028	15
25	70 MRAD Kamal	AUS	PHM AIX Racing	PHM AIX Racing	Tatuus F4-T421	R	1'46.447	1.255	0.036	15
26	71 REHM Maxim	DEU	US Racing	US Racing	Tatuus F4-T421	R	1'46.547	1.355	0.100	5
27	62 ROBINSON Edward	ESP	AS Motorsport	AS Motorsport	Tatuus F4-T421	R	1'46.652	1.460	0.105	12
28	24 ZHANG Shimo	CHN	Jenzer Motorsport	Jenzer Motorsport	Tatuus F4-T421	R	1'46.666	1.474	0.014	16
29	20 RYBA Matus	SVK	Jenzer Motorsport	Jenzer Motorsport	Tatuus F4-T421	R	1'46.699	1.507	0.033	8
30	19 ANURAG Kabir	SGP	US Racing	US Racing	Tatuus F4-T421	R	1'46.709	1.517	0.010	5
31	22 FREY Enea	CHE	Jenzer Motorsport	Jenzer Motorsport	Tatuus F4-T421	R	1'46.826	1.634	0.117	7
32	18 KOLLER Jan	CZE	BVM Racing	BVM Racing	Tatuus F4-T421	R	1'46.887	1.695	0.061	9
33	11 VIISOREANU Luca	ROU	Real Racing	Real Racing	Tatuus F4-T421	R	1'46.984	1.792	0.097	13
34	5 DOBRZANSKI Wiktor	POL	AKM Motorsport	AKM Motorsport	Tatuus F4-T421		1'47.299	2.107	0.315	13
35	9 STACK Everett	USA	PHM AIX Racing	PHM AIX Racing	Tatuus F4-T421		1'47.865	2.673	0.566	8
36	54 HOLGUIN Gabriel	VEN	Maffi Racing	Maffi Racing	Tatuus F4-T421	R	1'48.922	3.730	1.057	15
37	29 BERREBY Nathanael	CHE	Maffi Racing	Maffi Racing	Tatuus F4-T421	R	1'48.942	3.750	0.020	16
38	34 MACEDO Francisco	PRT	Cram Motorsport	Cram Motorsport	Tatuus F4-T421	R	1'49.252	4.060	0.310	12

Humidity:	56%	AIR	20°C
Condition:	WET	Track	37°C

Clerk of the Course : Massimiliano Ghinassi

Race Director : Alessandro Ferrari

	Start	End
31/05/2024	14:30	15:11



ACI Racing Weekend Imola, 1-2 Giugno 2024

Italian F4 Championship - Results Free Practice 2

 Imola Circuit 4.909 m
 2 / 2

Penalty and Infringment

Fastest Laps Sequence

No.	Entrant	Nat	Team	Car	Local Time	Time	Gap	Avg
36	G. JONSSON	SWE	Van Amersfoort Racing	Tatuus F4-T421	14:33'56.742	1'49.462		161,448
20	M. RYBA	SVK	Jenzer Motorsport	Tatuus F4-T421	14:34'09.052	1'49.458	-0.004	161,454
27	F. SLATER	GBR	Prema Racing	Tatuus F4-T421	14:35'15.364	1'48.851	-0.607	162,354
33	T. STOLCERMANIS	LVA	Prema Racing	Tatuus F4-T421	14:35'20.685	1'48.223	-0.628	163,296
51	K. NAKAMURA-BERTA	JPN	Prema Racing	Tatuus F4-T421	14:35'22.718	1'47.923	-0.300	163,750
36	G. JONSSON	SWE	Van Amersfoort Racing	Tatuus F4-T421	14:35'43.616	1'46.874	-1.049	165,357
6	H. YAMAKOSHI	JPN	Van Amersfoort Racing	Tatuus F4-T421	14:35'45.714	1'46.614	-0.260	165,761
36	G. JONSSON	SWE	Van Amersfoort Racing	Tatuus F4-T421	14:37'29.988	1'46.372	-0.242	166,138
55	A. RODELLA	ITA	Van Amersfoort Racing	Tatuus F4-T421	14:37'33.883	1'46.367	-0.005	166,146
21	E. ISCHER	CHE	Jenzer Motorsport	Tatuus F4-T421	14:37'35.887	1'46.210	-0.157	166,391
80	A. POWELL	USA	Prema Racing	Tatuus F4-T421	14:38'59.916	1'45.993	-0.217	166,732
23	R. FRANCO	NLD	Jenzer Motorsport	Tatuus F4-T421	14:39'40.144	1'45.700	-0.293	167,194
36	G. JONSSON	SWE	Van Amersfoort Racing	Tatuus F4-T421	14:41'01.919	1'45.533	-0.167	167,459
36	G. JONSSON	SWE	Van Amersfoort Racing	Tatuus F4-T421	14:44'33.009	1'45.414	-0.119	167,648
80	A. POWELL	USA	Prema Racing	Tatuus F4-T421	15:05'27.498	1'45.391	-0.023	167,684
51	K. NAKAMURA-BERTA	JPN	Prema Racing	Tatuus F4-T421	15:07'10.642	1'45.373	-0.018	167,713
50	D. GOWDA	IND	Prema Racing	Tatuus F4-T421	15:10'40.379	1'45.212	-0.161	167,969
80	A. POWELL	USA	Prema Racing	Tatuus F4-T421	15:10'43.675	1'45.192	-0.020	168,001

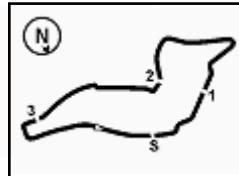
Clerk of the Course : Massimiliano Ghinassi

Race Director : Alessandro Ferrari

31/05/2024 Start 14:30 End 15:11

Powered by FICr PERUGIA TIMING





ACI Racing Weekend Imola, 1-2 Giugno 2024

Italian F4 Championship - Ideal Time Free Practice 2

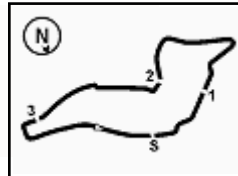
 Imola Circuit 4.909 m
1 / 2

No. Driver	Car	Seg. 1 Diff. 1	Seg. 2 Diff. 2	Seg. 3 Diff. 3	Seg. 4 Diff. 4	Ideal Time		
						Best Lap	Pos.	Diff.
1 80 POWELL A. (USA)	Tatuus F4-T421	22.651	33.763 +0.096	29.914	18.768	1'45.096	1	0.096
2 36 JONSSON G. (SWE)	Tatuus F4-T421	22.744 +0.038	33.772 +0.172	29.862	18.826	1'45.204	4	0.210
3 50 GOWDA D. (IND)	Tatuus F4-T421	22.675	33.901 +0.001	29.777	18.858	1'45.211	2	0.001
4 51 NAKAMURA-BERTA K.	Tatuus F4-T421	22.697 +0.081	33.781	29.881 +0.030	18.903	1'45.262	3	0.111
5 33 STOLCERMANIS T. (LVA)	Tatuus F4-T421	22.669 +0.139	33.897	29.892	18.848 +0.087	1'45.306	6	0.226
6 27 SLATER F. (GBR)	Tatuus F4-T421	22.735 +0.014	33.783	29.896 +0.010	18.960 +0.024	1'45.374	5	0.048
7 8 KOSTIC A. (SRB)	Tatuus F4-T421	22.665 +0.044	34.021	29.951	18.867	1'45.504	7	0.044
8 23 FRANCO R. (NLD)	Tatuus F4-T421	22.703 +0.138	33.955	29.970	18.905	1'45.533	11	0.138
9 6 YAMAKOSHI H. (JPN)	Tatuus F4-T421	22.689 +0.115	33.889 +0.234	30.002	18.959	1'45.539	14	0.349
10 7 SAMMALISTO L. (FIN)	Tatuus F4-T421	22.739	33.929 +0.007	30.005 +0.041	18.872 +0.012	1'45.545	8	0.060
11 73 OLIVIERI E. (ITA)	Tatuus F4-T421	22.835 +0.050	33.935	29.878	18.912	1'45.560	9	0.050
12 14 AL DHAHERI R. (UAE)	Tatuus F4-T421	22.824	33.887 +0.020	29.952	18.941 +0.023	1'45.604	10	0.043
13 55 RODELLA A. (ITA)	Tatuus F4-T421	22.782 +0.074	34.040 +0.349	29.901	18.997 +0.083	1'45.720	20	0.506
14 21 ISCHER E. (CHE)	Tatuus F4-T421	22.745 +0.020	34.036	30.084	18.876 +0.115	1'45.741	13	0.135
15 45 BEETON J. (AUS)	Tatuus F4-T421	22.694 +0.104	34.076 +0.026	30.005	18.982 +0.023	1'45.757	15	0.153
16 31 BOHRA A. (USA)	Tatuus F4-T421	22.737 +0.014	34.131	29.972	18.953	1'45.793	12	0.014
17 77 YEH E. (CHN)	Tatuus F4-T421	22.788 +0.096	34.079 +0.134	30.073	18.973 +0.027	1'45.913	18	0.257
18 16 LARINI D. (ITA)	Tatuus F4-T421	22.764	34.187 +0.070	29.954	19.027 +0.129	1'45.932	17	0.199
19 49 PETROVIC A. (SRB)	Tatuus F4-T421	22.737 +0.043	34.099 +0.186	30.104 +0.016	19.022	1'45.962	19	0.245
20 10 FERREIRA M. (BRA)	Tatuus F4-T421	22.795 +0.091	34.062 +0.239	30.077	19.034	1'45.968	21	0.330
21 52 SAVINKOV O. (UKR)	Tatuus F4-T421	22.893 +0.143	34.181	30.069 +0.104	18.948 +0.073	1'46.091	24	0.320
22 3 POPOV M. (GRD)	Tatuus F4-T421	22.840 +0.065	34.271 +0.015	30.007 +0.127	18.989	1'46.107	22	0.207
23 88 HODENIUS L. (NLD)	Tatuus F4-T421	22.750	34.268	30.173	18.924	1'46.115	16	
24 71 REHM M. (DEU)	Tatuus F4-T421	22.792 +0.137	34.246	30.137 +0.091	19.099 +0.045	1'46.274	26	0.273
25 70 MRAD K. (AUS)	Tatuus F4-T421	22.893	34.149 +0.102	30.184	19.062 +0.057	1'46.288	25	0.159
26 12 PRADEL G. (AUS)	Tatuus F4-T421	22.866	34.338	30.130	19.049	1'46.383	23	
27 24 ZHANG S. (CHN)	Tatuus F4-T421	22.782 +0.044	34.251 +0.109	30.396 +0.058	19.018 +0.008	1'46.447	28	0.219
28 62 ROBINSON E. (ESP)	Tatuus F4-T421	23.066 +0.033	34.176	30.271	19.106	1'46.619	27	0.033
29 22 FREY E. (CHE)	Tatuus F4-T421	22.900 +0.117	34.335 +0.064	30.372 +0.019	19.019	1'46.626	31	0.200
30 19 ANURAG K. (SGP)	Tatuus F4-T421	22.945 +0.080	34.336	30.310	19.038	1'46.629	30	0.080
31 20 RYBA M. (SVK)	Tatuus F4-T421	22.995	34.406	30.249	19.049	1'46.699	29	
32 18 KOLLER J. (CZE)	Tatuus F4-T421	22.935 +0.091	34.441	30.234	19.159 +0.027	1'46.769	32	0.118
33 11 VIISOREANU L. (ROU)	Tatuus F4-T421	23.020 +0.122	34.392	30.349	19.101	1'46.862	33	0.122

31/05/2024

Powered by FICr PERUGIA TIMING





ACI Racing Weekend Imola, 1-2 Giugno 2024

Italian F4 Championship - Ideal Time Free Practice 2

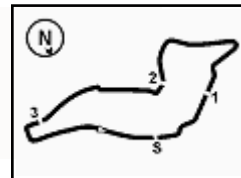
 Imola Circuit 4.909 m
2 / 2

No. Driver	Car	Seg. 1 Diff. 1	Seg. 2 Diff. 2	Seg. 3 Diff. 3	Seg. 4 Diff. 4	Ideal Time			
						Best Lap	Pos.	Diff.	
34	5 DOBRZANSKI W. (POL)	Tatuus F4-T421	23.085 +0.013	34.633 +0.092	30.484	18.992	1'47.194 1'47.299	34	0.105
35	9 STACK E. (USA)	Tatuus F4-T421	23.194 +0.066	34.701 +0.042	30.630	19.199 +0.033	1'47.724 1'47.865	35	0.141
36	34 MACEDO F. (PRT)	Tatuus F4-T421	23.528 +0.020	34.818 +0.446	30.838	19.449 +0.153	1'48.633 1'49.252	38	0.619
37	54 HOLGUIN G. (VEN)	Tatuus F4-T421	23.278 +0.151	35.079 +0.089	30.890	19.417 +0.018	1'48.664 1'48.922	36	0.258
38	29 BERREBY N. (CHE)	Tatuus F4-T421	23.329 +0.008	34.891	30.990	19.459 +0.265	1'48.669 1'48.942	37	0.273
Overall Ideal Time			22.651	33.763	29.777	18.768	1'44.959		





2.5



Imola Circuit 4.909 m

5 / 5

ACI Racing Weekend Imola, 1-2 Giugno 2024 Italian F4 Championship - Chronological Analysis Free Practice 2

9	55.868	35.851	33.302	19.513	2'24.534P	162,7	14:59'04.450
10	23.520	34.735	30.588	19.400	1'48.243	233,3	15:00'52.693
11	23.127	34.431	30.405	19.142	1'47.105	226,9	15:02'39.798
12	22.893	34.251	30.184	19.119	1'46.447	226,4	15:04'26.245
13	22.927	34.408	30.873	19.255	1'47.463	225,9	15:06'13.708
14	23.183	34.356	30.194	19.164	1'46.897	223,1	15:08'00.605
15	23.142	34.149	30.267	19.143	1'46.701	237,9	15:09'47.306
16	23.076	34.460	30.223	19.315	1'47.074	222,2	15:11'34.380

6	22.742	38.930	31.779	19.183	1'52.634	229,3	14:40'52.550
7	22.757	34.109	30.177	18.913	1'45.956	226,4	14:42'38.506
8	22.762	33.998	30.212	18.953	1'45.925	226,4	14:44'24.431
9	22.684	34.220	31.482	11'59.222	13'27.608P	226,9	14:57'52.039
10	44.133	36.841	31.379	19.265	2'11.618P	159,1	15:00'03.657
11	23.732	35.491	32.582	20.645	1'52.450	227,0	15:01'56.107
12	22.893	34.128	30.051	18.928	1'46.000	220,4	15:03'42.107
13	22.754	33.763	30.076	18.798	1'45.391	226,9	15:05'27.498
14	22.707	33.897	30.042	18.867	1'45.513	226,9	15:07'13.011
15	22.751	33.797	30.102	18.822	1'45.472	228,3	15:08'58.483
16	22.651	33.859	29.914	18.768	1'45.192	226,9	15:10'43.675

71 M. REHM (1'46.547)

Lap	Seg.1	Seg.2	Seg.3	Seg.4	Lap Time	km/h	Local Time
1		37.164	32.719	1'03.370		164,1	
2	1'24.792	36.077	36.585	20.959	2'58.413P	168,2	14:36'18.909
3	23.248	34.401	30.368	19.099	1'47.116	228,8	14:38'06.025
4	22.929	34.246	30.228	19.144	1'46.547	228,8	14:39'52.572
5	22.926	34.513	30.474	19.307	1'47.220	230,3	14:41'39.792
6	22.903	34.466	30.137	19.162	1'46.668	230,3	14:43'26.460
7	22.792	34.293	30.190			231,8	

88 L. HODENIUS (1'46.115)

Lap	Seg.1	Seg.2	Seg.3	Seg.4	Lap Time	km/h	Local Time
1		38.686	33.065	19.939		139,9	
2	23.836	36.010	31.596	19.210	1'50.652	226,9	14:34'03.789
3	23.399	34.591	30.363	19.064	1'47.417	230,8	14:35'51.206
4	24.076	34.291	30.505	18.976	1'47.848	229,3	14:37'39.054
5	22.987	34.417	30.251	19.044	1'46.699	228,3	14:39'25.753
6	22.750	34.268	30.173	18.924	1'46.115	230,8	14:41'11.868
7	23.078	34.559	30.644	19.910	1'48.191	234,8	14:43'00.059
8	22.892	34.536	30.272	19.312	1'47.012	231,3	14:44'47.071
9	23.352	38.280	58.900	52.356	2'52.888P	228,8	14:47'39.959
10					2'105.560P		15:08'45.519

73 E. OLIVIERI (1'45.610)

Lap	Seg.1	Seg.2	Seg.3	Seg.4	Lap Time	km/h	Local Time
1		39.288	33.702	4'44.312		154,7	
2	40.363	41.191	33.033	20.734	2'15.321P	168,2	14:39'25.329
3	24.315	35.287	30.654	19.364	1'49.620	204,2	14:41'14.949
4	23.118	34.524	30.251	19.149	1'47.042	230,3	14:43'01.991
5	23.003	34.917	30.435	2'23.923	3'52.278P	234,3	14:46'54.269
6	59.819	1'00.612	1'01.952	6'50.316	9'52.699P	71,6	14:56'46.968
7	50.470	36.047	32.545	19.329	2'18.391P	168,8	14:59'05.359
8	23.421	35.575	30.618	19.935	1'49.549	232,8	15:00'54.908
9	22.936	34.484	35.903	19.242	1'52.565	229,8	15:02'47.473
10	22.835	34.130	30.309	19.029	1'46.303	229,8	15:04'33.776
11	22.885	34.136	30.159	19.056	1'46.236	228,3	15:06'20.012
12	22.948	34.039	30.182	18.918	1'46.087	230,3	15:08'06.099
13	23.066	33.976	29.912	18.953	1'45.907	230,8	15:09'52.006
14	22.885	33.935	29.878	18.912	1'45.610	231,8	15:11'37.616

77 E. YEH (1'46.170)

Lap	Seg.1	Seg.2	Seg.3	Seg.4	Lap Time	km/h	Local Time
1							
2	50.049	38.218	33.547	20.354	2'22.168P	156,7	14:33'20.305
3	24.578	35.426	31.392	24.407	1'55.803	213,4	14:35'16.108
4	23.382	35.345	30.745	19.231	1'48.703	226,4	14:37'04.811
5	23.255	34.512	30.540	19.150	1'47.457	225,9	14:38'52.268
6	23.004	34.320	30.289	18.973	1'46.586	227,8	14:40'38.854
7	22.963	34.600	30.174	19.034	1'46.771	228,8	14:42'25.625
8	22.888	34.319	30.720	19.096	1'47.023	230,3	14:44'12.648
9	22.985	34.358	30.499	11'09.419	12'37.261P	227,4	14:56'49.909
10	48.390	35.678	32.467	19.469	2'16.004P	164,4	14:59'05.913
11	23.333	35.839	30.696	19.665	1'49.533	231,8	15:00'55.446
12	22.928	34.554	32.025	19.145	1'48.652	231,3	15:02'44.098
13	22.846	34.240	30.224	19.077	1'46.387	230,3	15:04'30.485
14	22.788	34.079	30.404	19.000	1'46.271	229,8	15:06'16.756
15	22.854	34.424	30.258	19.159	1'46.695	231,8	15:08'03.451
16	22.884	34.213	30.073	19.000	1'46.170	229,8	15:09'49.621
17	22.818	34.187	30.143	19.060	1'46.208	230,3	15:11'35.829

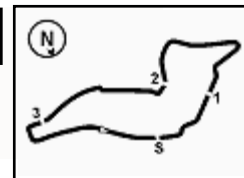
80 A. POWELL (1'45.192)

Lap	Seg.1	Seg.2	Seg.3	Seg.4	Lap Time	km/h	Local Time
1							
2	43.471	37.525	33.829	20.900	2'15.725P	155,2	14:33'39.054
3	23.534	34.718	30.607	19.217	1'48.076	221,8	14:35'27.130
4	23.039	34.250	30.389	19.115	1'46.793	224,5	14:37'13.923
5	22.830	34.045	30.182	18.936	1'45.993	225,9	14:38'59.916

31/05/2024 P = Pits In/Out - C = Lap Time Cancelled

Powered by FICr PERUGIA TIMING

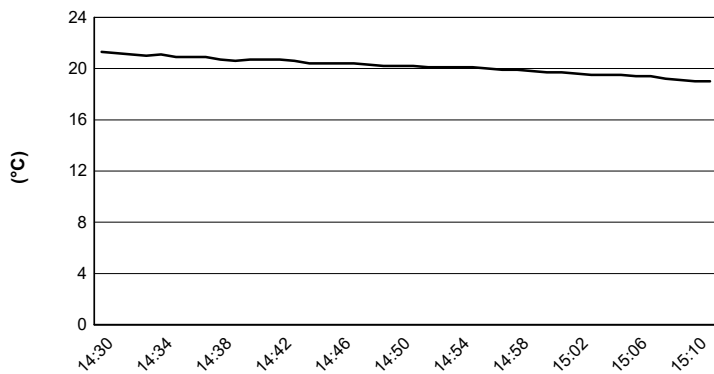




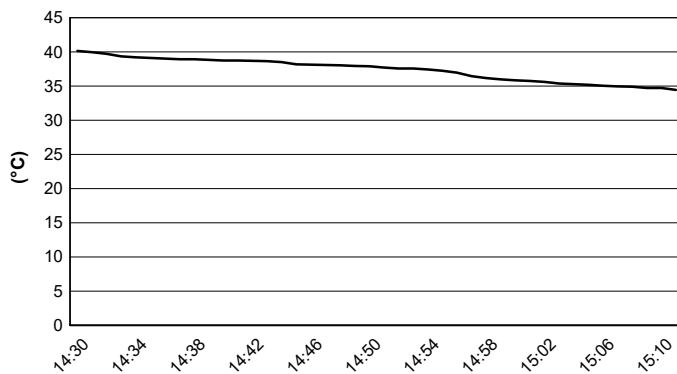
Imola Circuit 4.909 m

ACI Racing Weekend Imola, 1-2 Giugno 2024
Italian F4 Championship - Weather Report Free Practice 2
 Session started 14:30 - Session ended 15:11

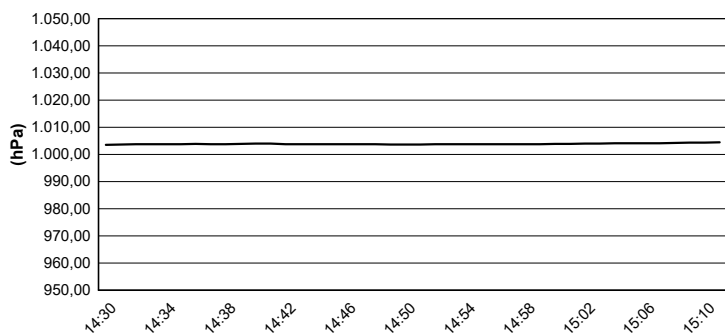
Air Temperature



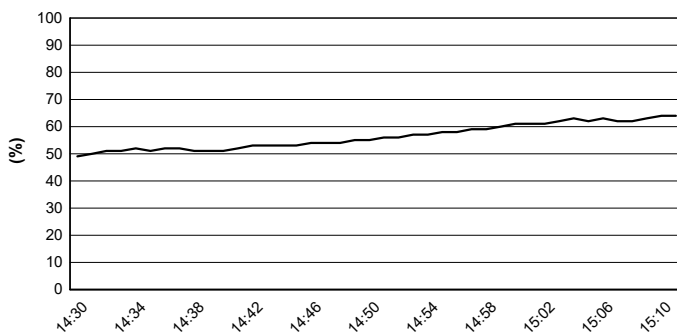
Track Temperature



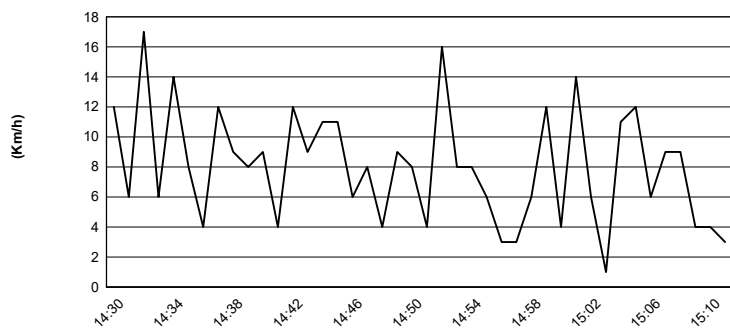
Air Pressure



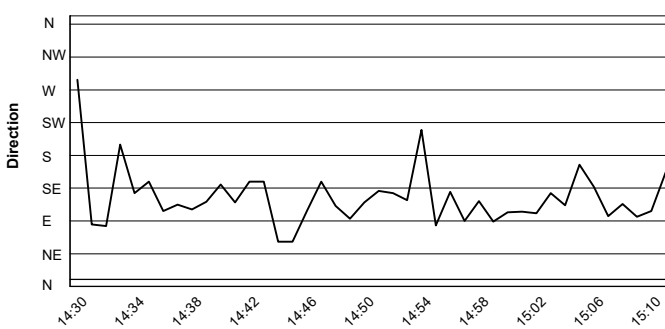
Humidity



Wind Speed



Wind Direction



31/05/2024

